

Lava Fire Map for 10/20/2024

Public Information

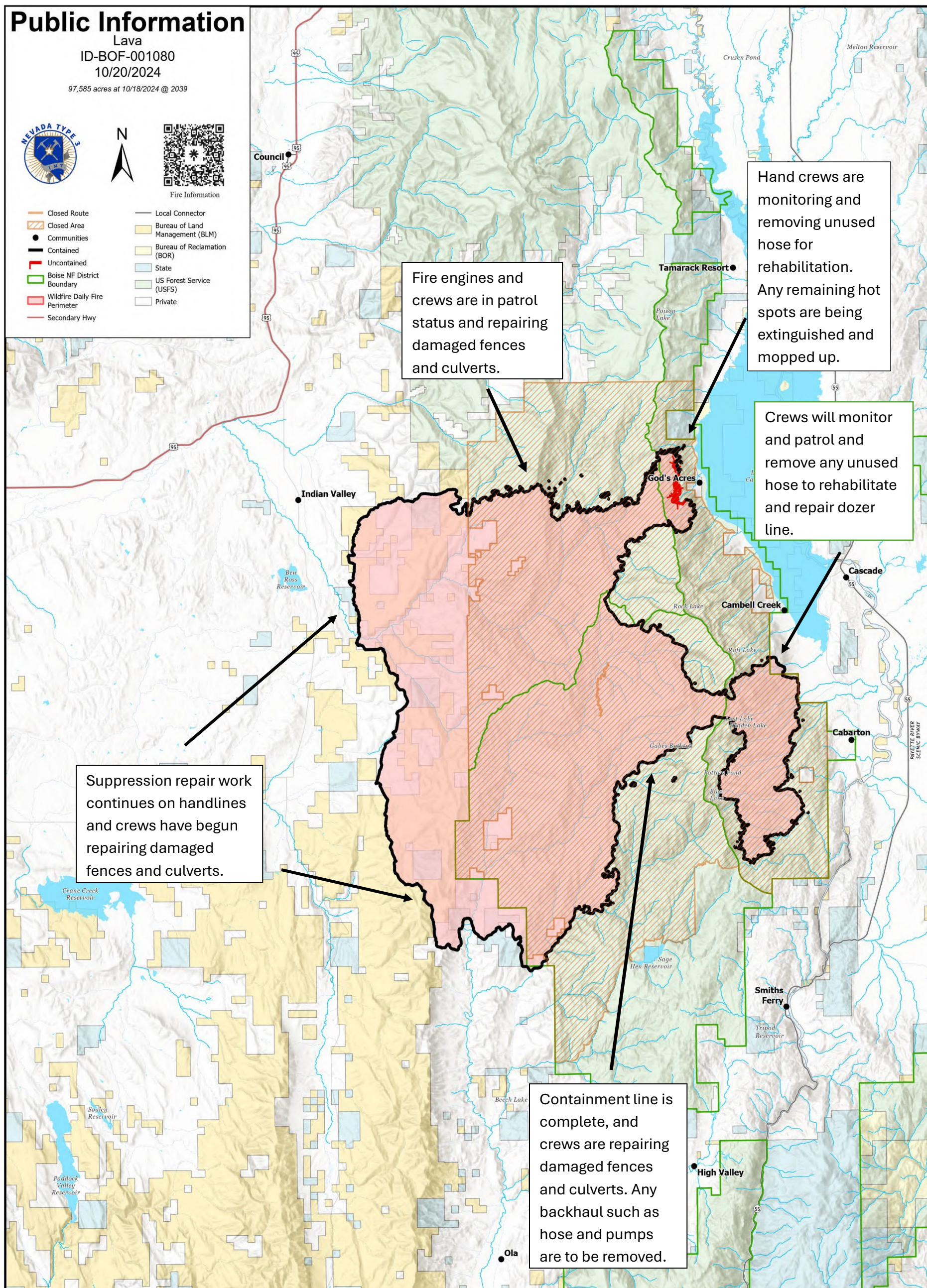
Lava
ID-BOF-001080
10/20/2024

97,585 acres at 10/18/2024 @ 2039



Fire Information

- Closed Route
- Closed Area
- Communities
- Contained
- Uncontained
- Boise NF District Boundary
- Wildfire Daily Fire Perimeter
- Secondary Hwy
- Local Connector
- Bureau of Land Management (BLM)
- Bureau of Reclamation (BOR)
- State
- US Forest Service (USFS)
- Private



Fire engines and crews are in patrol status and repairing damaged fences and culverts.

Hand crews are monitoring and removing unused hose for rehabilitation. Any remaining hot spots are being extinguished and mopped up.

Crews will monitor and patrol and remove any unused hose to rehabilitate and repair dozer line.

Suppression repair work continues on handlines and crews have begun repairing damaged fences and culverts.

Containment line is complete, and crews are repairing damaged fences and culverts. Any backhaul such as hose and pumps are to be removed.

Incident Statistics: 97,585 acres, 94% contained, 189 people

Fire Information phone: (208) 780-5003 **Hours:** 7:00 a.m. to 7:00 p.m.

Email: 2024.Lava@firenet.gov

Facebook: @LavaFire

Inciweb: inciweb.wildfire.gov/incident-information/idbof-lava-fire